

# Capability profile in Manufacturing ESP system

## WORKING CAPABILITY AND SCOPE OF SUPPLY

- Designing, Fabricating, Construction and Commission ESP systems with various volume capacity for coal-fired power plants, cement plants, steel plants.
- Providing technical works such as retrofit, renovation of existing ESP systems.
- Providing engineering services such as technical consulting, field supervision for both new and existing ESP systems.
- Providing equipment, devices and spare parts for ESP systems, including

PLC -based control system of ESP

T/R units, T/R control panels, High voltage Insulators, Collecting Electrodes, Discharging Electrodes, Rapping Motors, Hammers,..

Sensors, Transmitters, Measuring Devices for ESP.

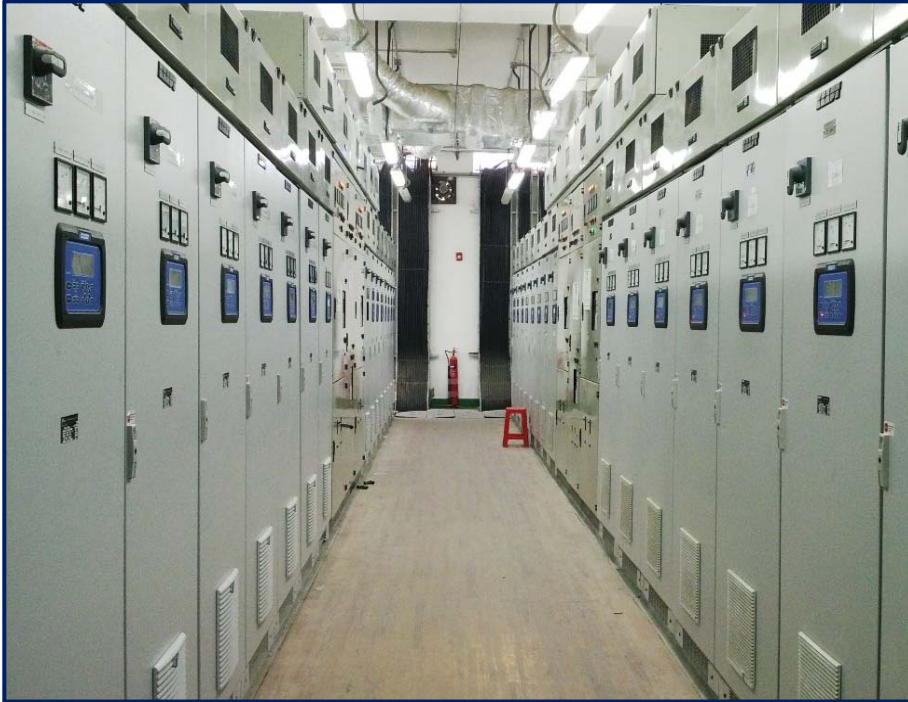
## PICTURES OF ACTIVITIES

PROVIDING ESP SYSTEM FOR VUNG ANG 1 COAL-FIRED POWER PLANT



SPECIAL EQUIPMENTS AND MACHINES IN FABRICATING WORKSHOP

## ELECTRIC PANELS OF ESP SYSTEM



...T/R control panels of ESP




...MCC panels of ESP

## TECHNICAL INFORMATION OF SUPPLIED PROJECTS

Power Capacity: 600 MW and 300 MW

Quantity: 06 systems



Volume Flow of Flue Gas treated by ESP : 1.000.000 Nm<sup>3</sup>/h

Dust concentration at the Inlet of ESP: 37,6 g/Nm<sup>3</sup>

Dust concentration at the Outlet of : 50 mg/Nm<sup>3</sup>

Outline dimension of ESP : 29 x 27 x 27,5 meters



## PROVIDING ESP SYSTEM FOR THAI BINH1 COAL-FIRED POWER PLANT



ESP SYSTEM DURING THE CONSTRUCTION PHASE

## FABRICATION PROCESS OF ESP'S CE ELECTRODES



Roll forming machine to fabricate CE electrodes



CE paltes ready for packing

## FABRICATION PROCESS OF ESP'S CE ELECTRODES



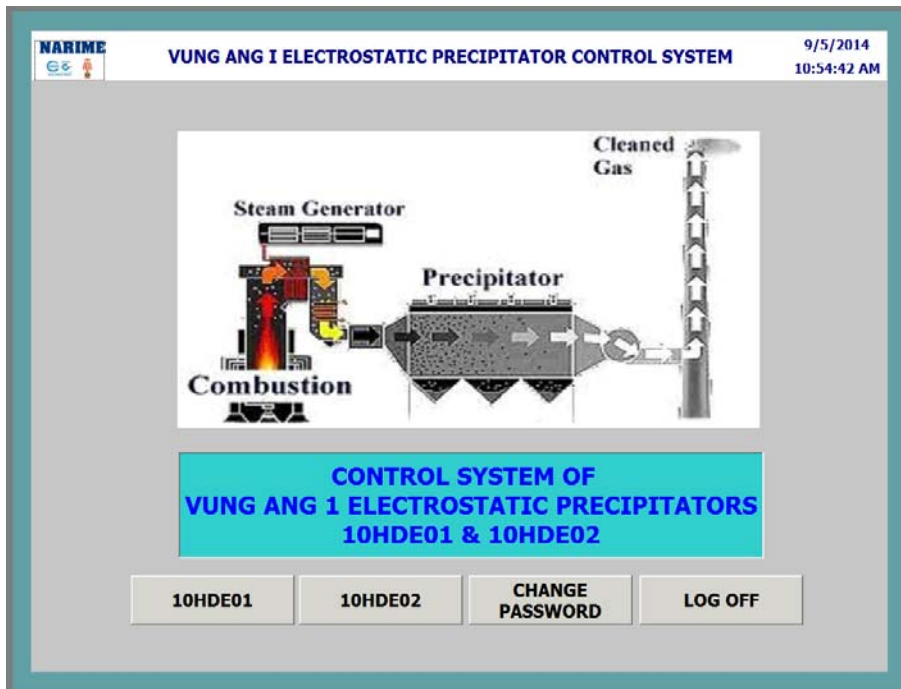
Servo-controlled punching machine to fabricate Discharge electrodes



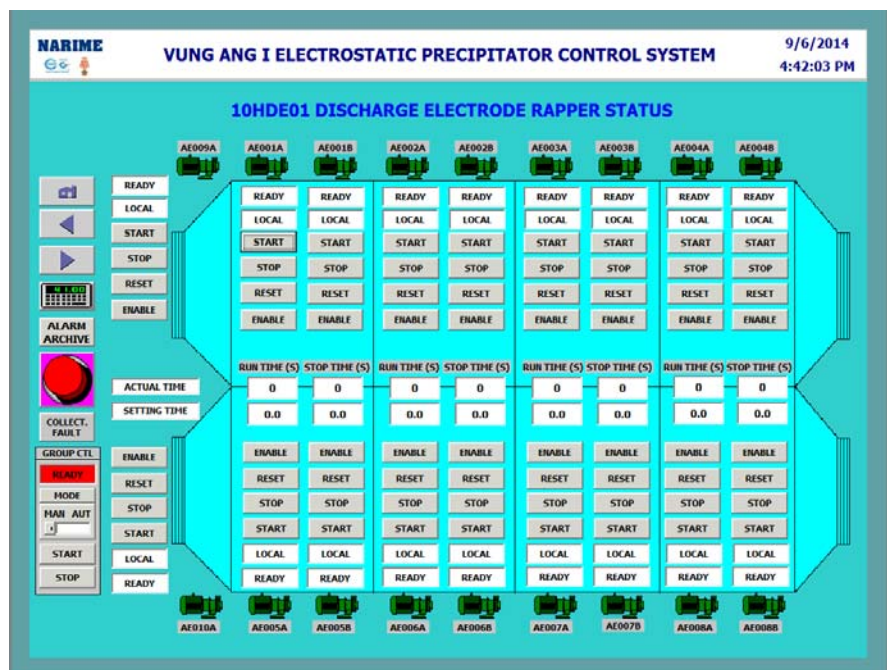
Suspension Frame of Discharge Electrode



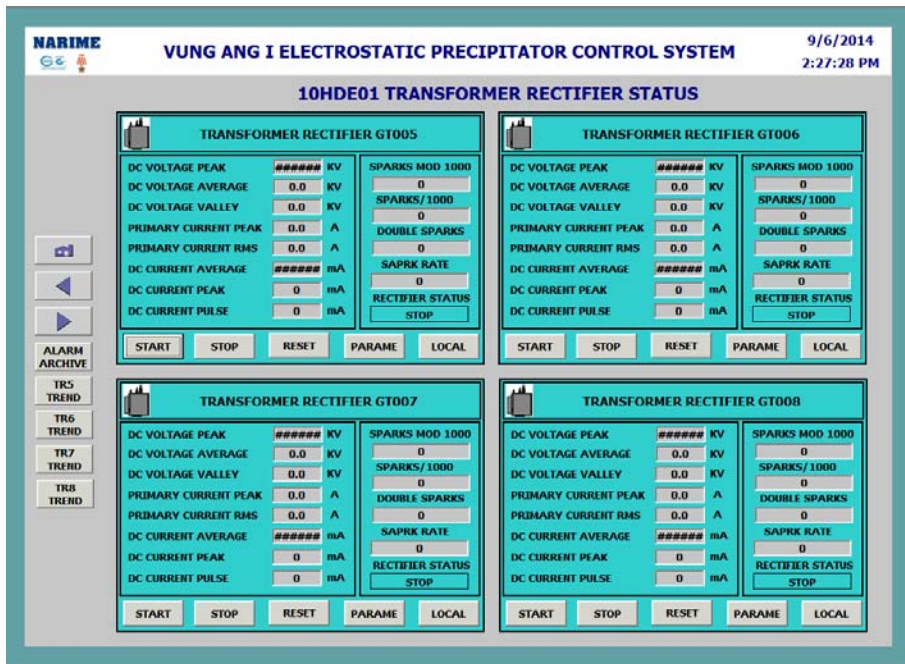
## PLC AND SCADA CONTROL SYSTEM OF ESP



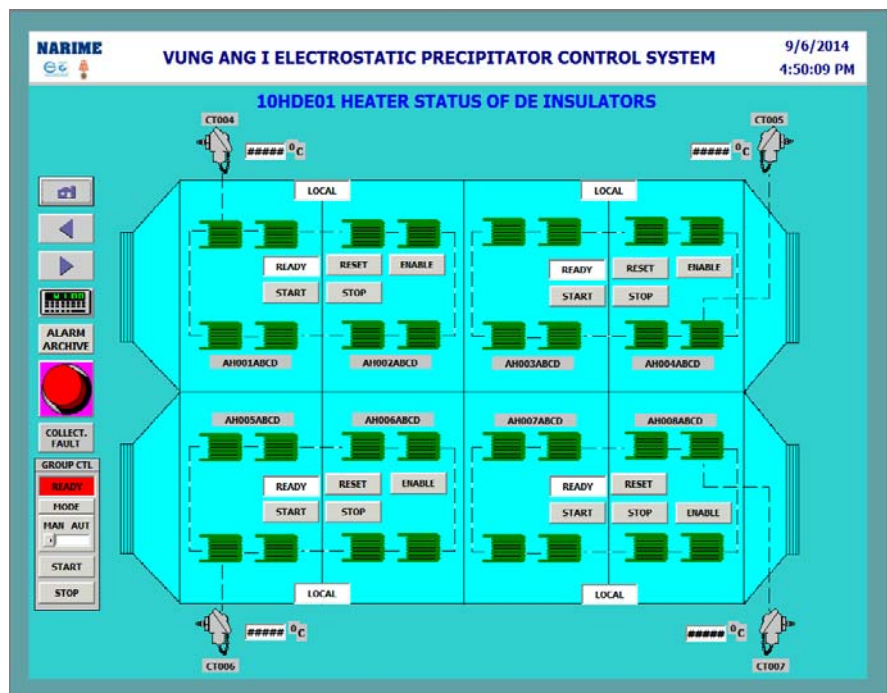
...Interface screen for monitoring DE, CE rapping motors...



CE paltes ready for packing



...Interface screen for monitoring Insulator Heating...



...Interface screen for control and monitoring T/R units ...

# **NARIME**

**National Research Institute of Mechanical Engineering**

No.4, Pham Van Dong Street, Cau Giay District

Ha Noi

Viet Nam

Tel: +84 04.376 44442

Fax: +84 04.376.49883

Email: [narime@narime.gov.vn](mailto:narime@narime.gov.vn)